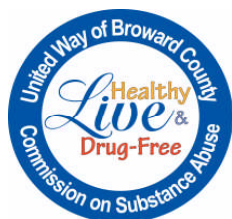


Broward Barometer of Substance Abuse Indicators Among Youth Winter 2009



The chart below summarizes the severity and trends for indicators of substance abuse among youth in Broward County, Florida. The Severity Index is based on the number of drug-related deaths and emergency department reports. Consumption Rates of use are based on 3 surveys among middle and high school students and the general population aged 12-20 years. Trends monitor changes in consumption and consequences over 2 years.



Intensity

Change

High

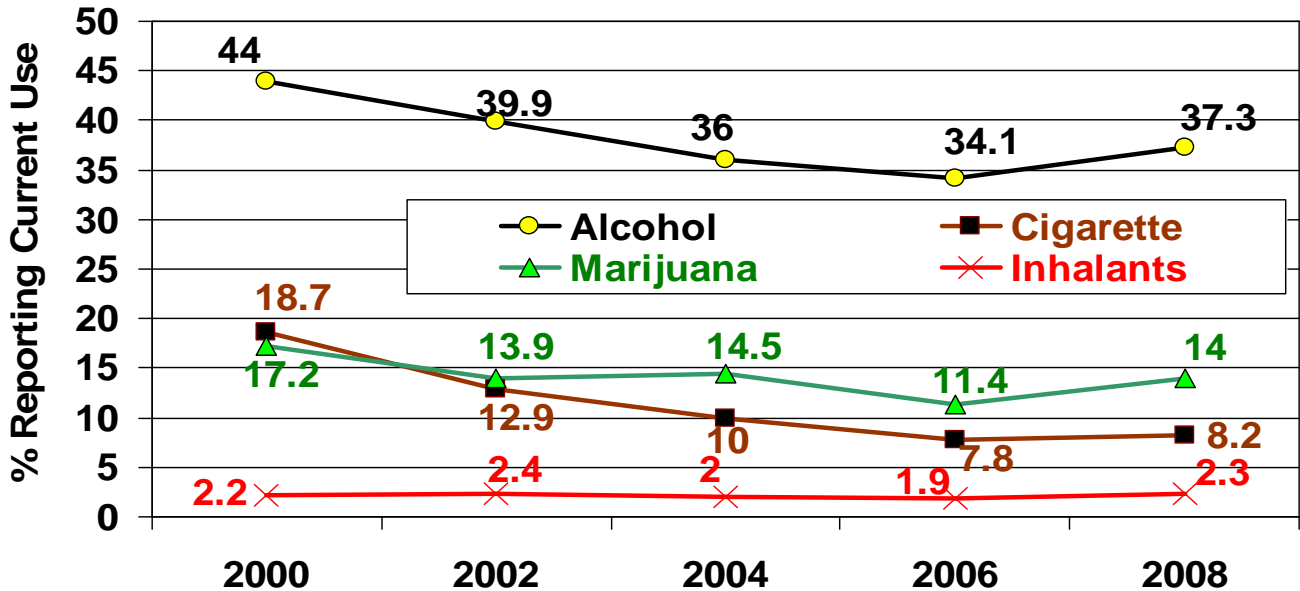
Low

Severity Rank	Substance	Consumption 2 Year Trend	Consequences 2 Year Trend
1.	Underage Alcohol	Rising	Falling
2.	Marijuana	Rising	Falling
3.	Cigarettes	Rising	Stable
4.	Rx Benzodiazepines	Falling	Rising
5.	Cocaine	Stable	Falling
6.	Rx Pain Medicines	Rising	Rising
7.	Inhalants	Stable	Stable
8.	MDMA ("Ecstasy")	Rising	Rising
9.	Heroin	Rising	Falling
10.	Methamphetamine	Rising	Rising

United Way of Broward County Commission On Substance Abuse
 Center for Study and Prevention of Substance Abuse, Nova Southeastern University
 Funded by the Byrne/JAG Grant Administered by Florida Department of Law Enforcement

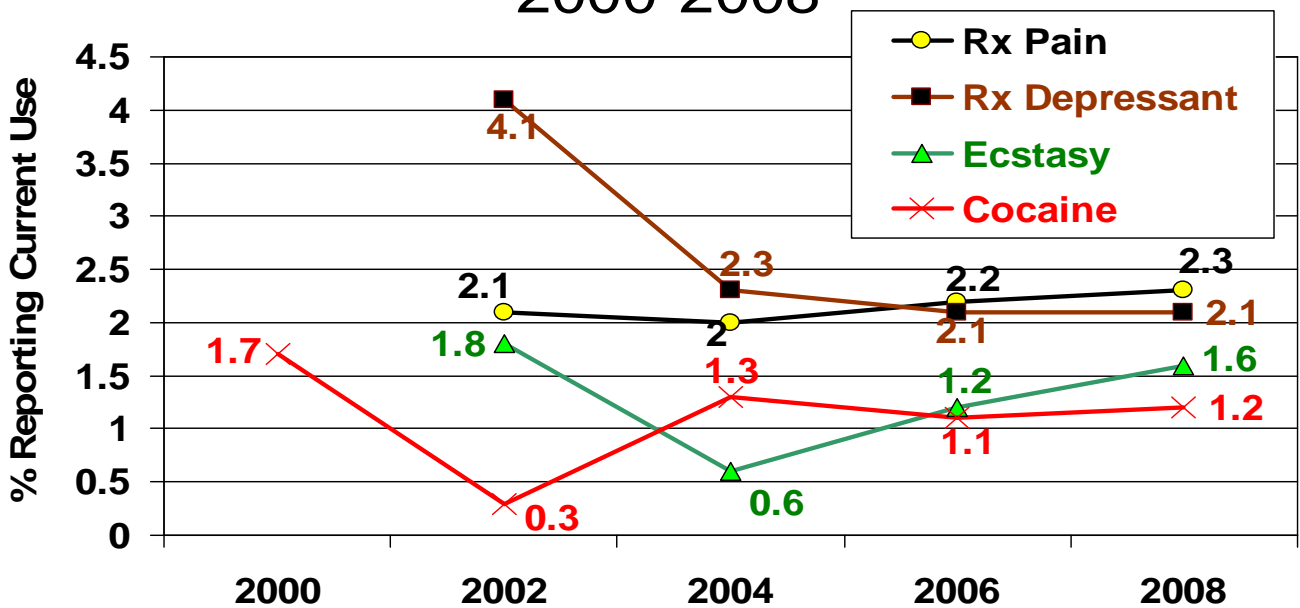


Current (past 30-day) Drug Use Among Broward County **High School** Students 2000-2008



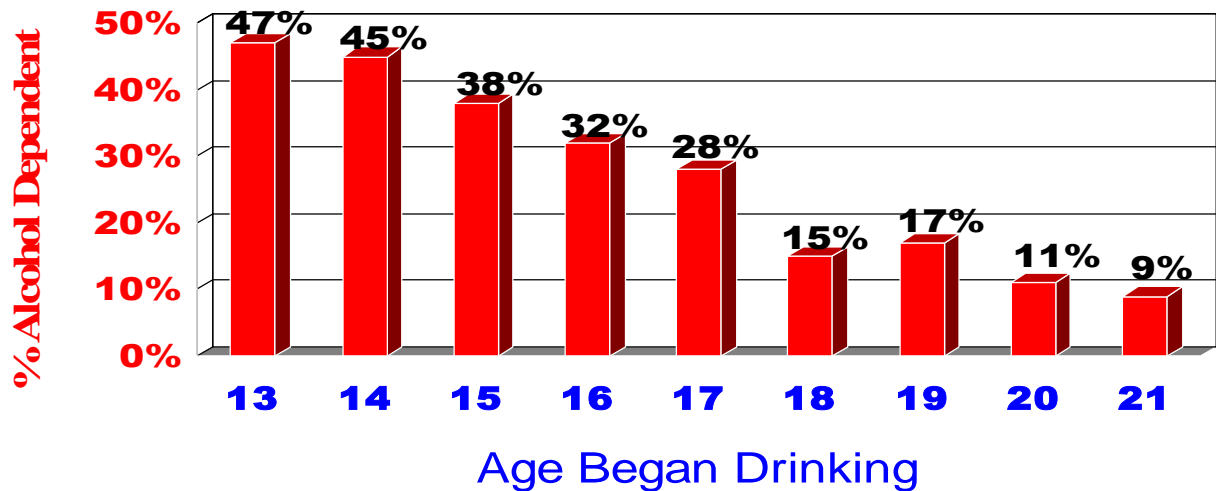
Source: Florida Youth Substance Abuse Surveys 2000-2008

Current (past 30-day) Drug Use Among Broward County **High School** Students 2000-2008



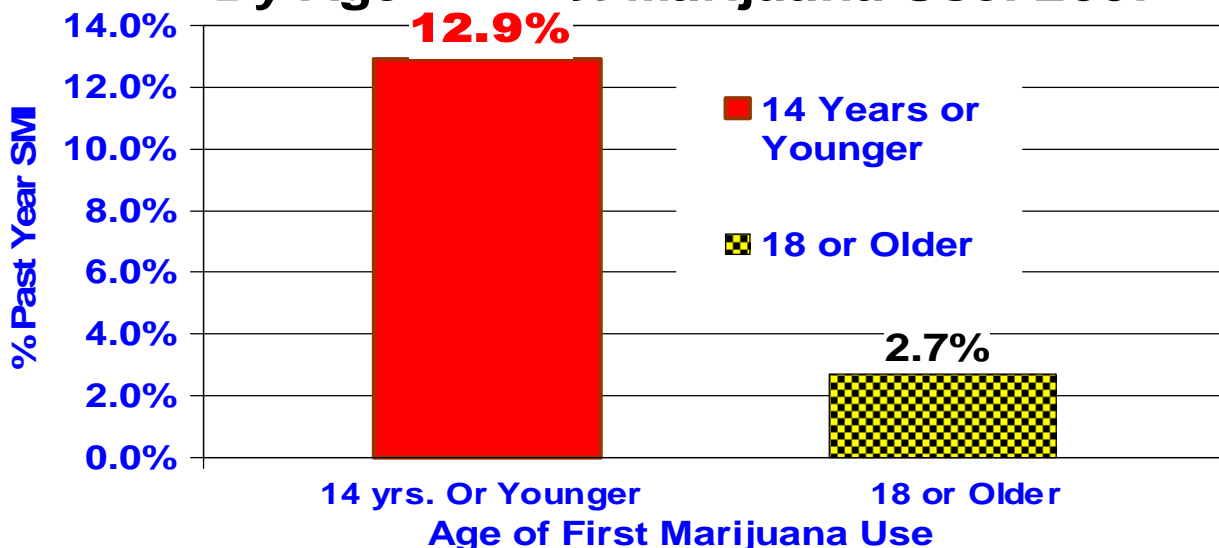
Source: Florida Youth Substance Abuse Surveys 2000-2008

Age of Onset and any Lifetime Alcohol Dependency Aged 18 and Older



Source: National Epidemiologic Survey on Alcohol and Related Conditions Sample = 43,093

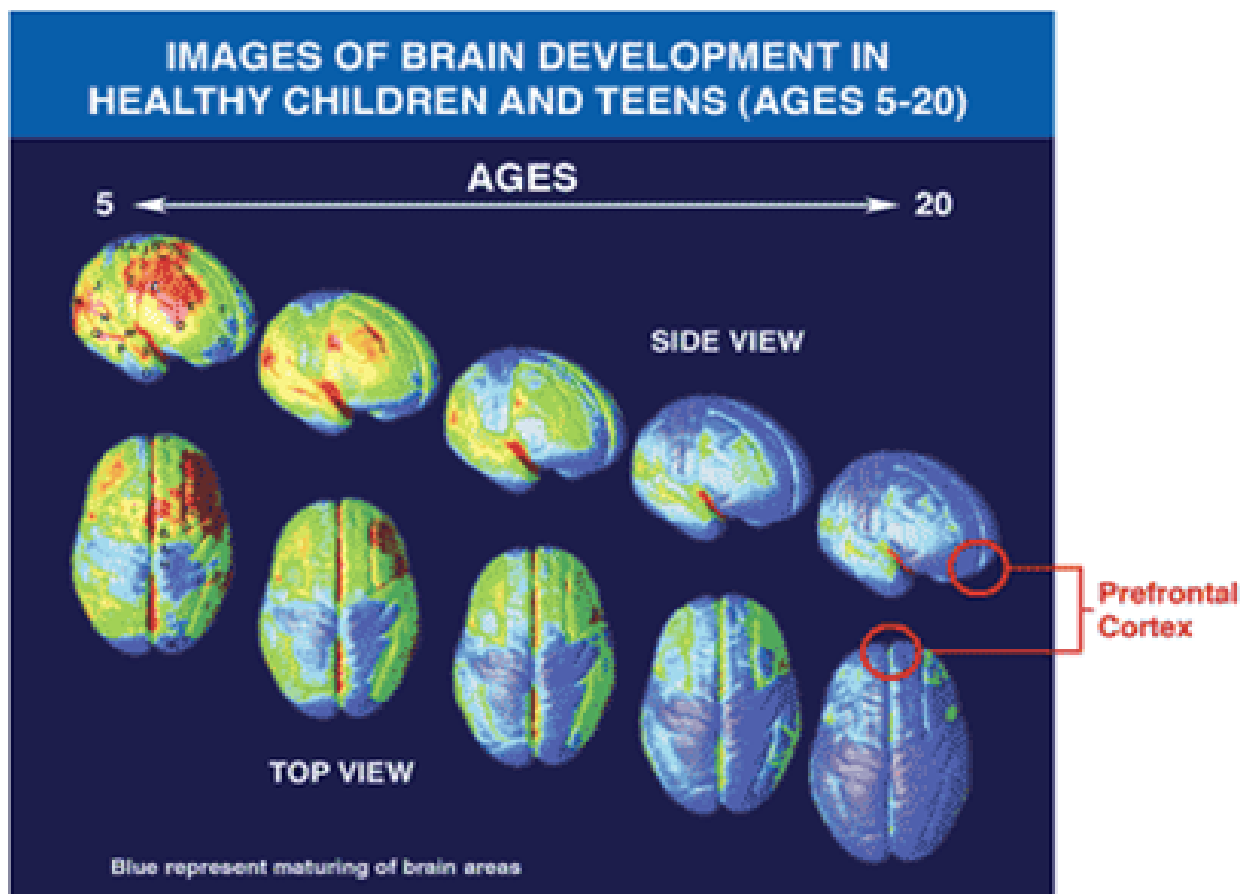
Percent of Past Year Drug Dependence or Abuse Among Adults Aged 18 or Older By Age of First Marijuana Use: 2007



Source: SAMHSA-National Survey on Drug Use and Health 2007

The Brain Continues to Develop into Adulthood

The brain undergoes dramatic changes during adolescence. One of the areas still maturing from ages 5 to 20 years is the **prefrontal cortex** the part of the brain that enables us to **assess situations** **make sound decisions** and **keep emotions and desires under control**. Introducing alcohol or other drugs while the brain is still developing may have profound and long-lasting consequences.



Source: Copyright PNAS (191(21):8174-9, 2004)

Theft or Violence Among Past Year Marijuana Users

Figure 4. Percentages of Youths Aged 12 to 17 Who Stole or Tried to Steal Anything Worth More Than \$50 in the Past Year, by Frequency of Past Year Marijuana Use: 2002

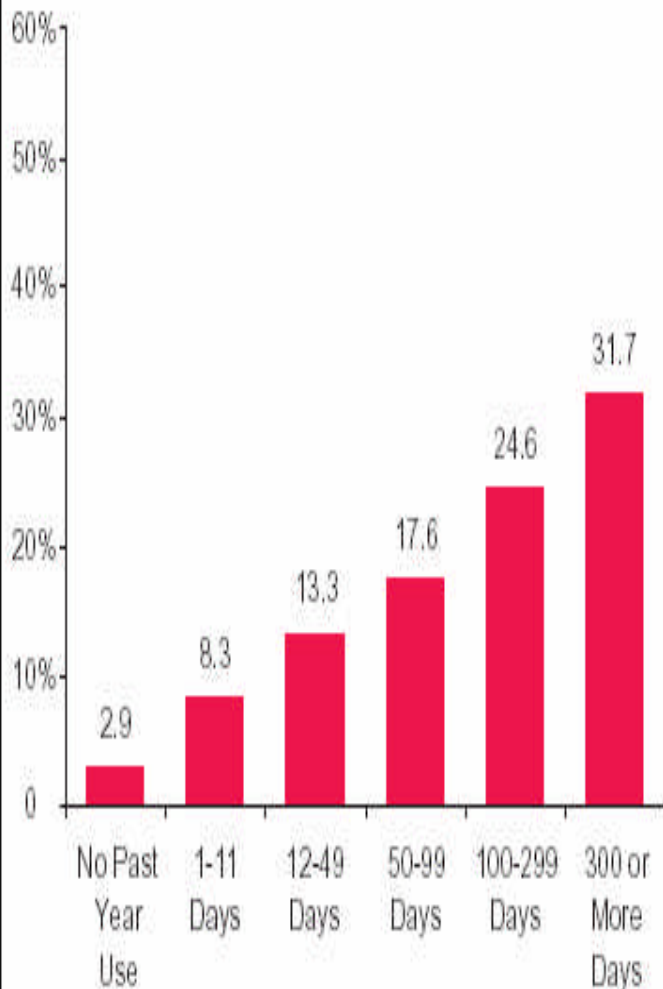
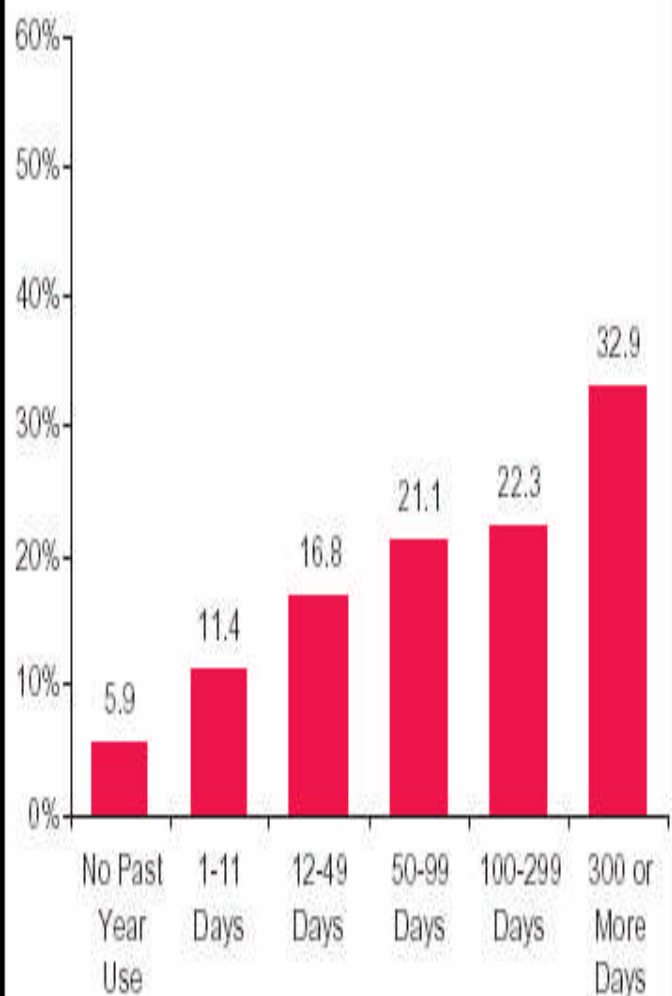


Figure 5. Percentages of Youths Aged 12 to 17 Who Attacked Someone With the Intent to Seriously Hurt Them in the Past Year, by Frequency of Past Year Marijuana Use: 2002



Source: National Survey on Drug Use and Health