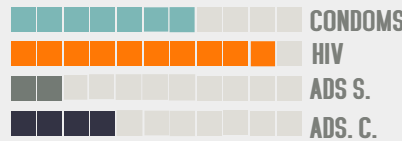
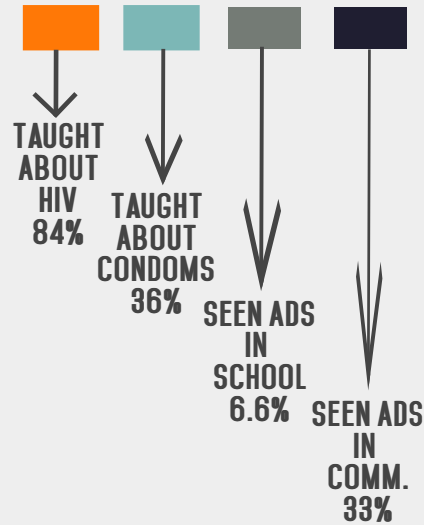


# YOUTH HEALTH & CLIMATE DEC. 2014



## SEXUAL EDUCATION

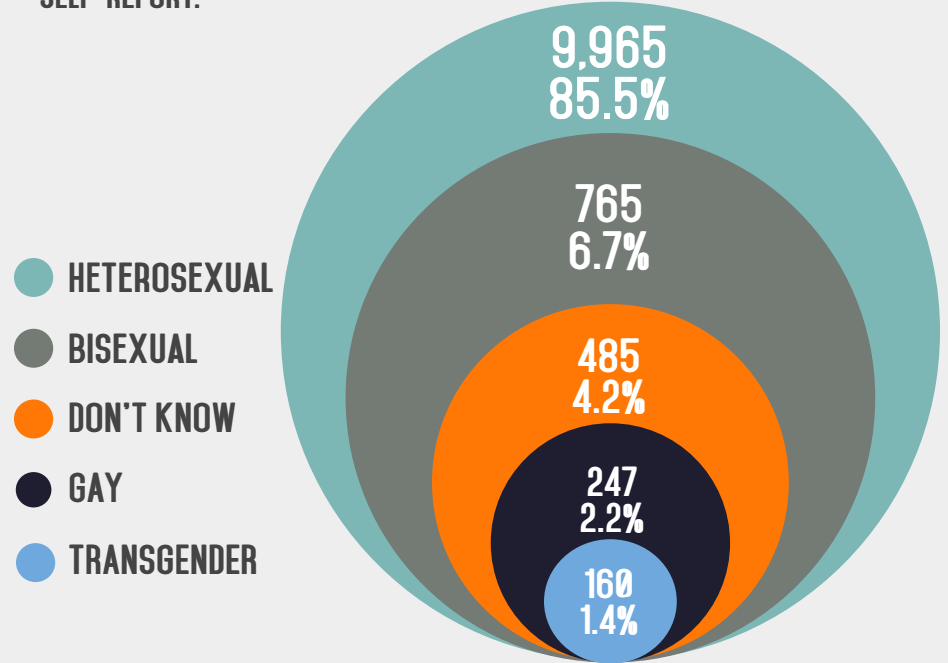


**CLIMATE SURVEY SUMMARY**  
**N= 11,681**  
 From 7 High Schools

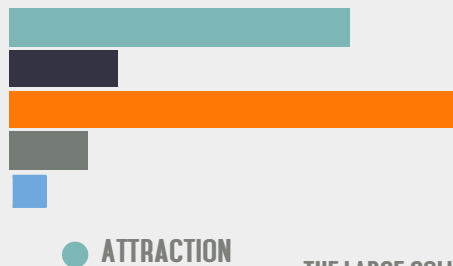
THIS SECTION IS NOT JUST RELATED TO FORMAL EDUCATION BUT TO THINGS THEY MIGHT LEARN FROM THEIR ENVIRONMENT.

## IDENTITY REPORT

SOME OF THESE NUMBERS ARE EXPECTED TO BE LARGER SINCE THIS IS A SELF-REPORT.



## SEXUAL PRACTICES



THE LARGE COLUMNS REPRESENT ATTRACTION WHICH IS NOT THE SAME AS ENGAGING IN SEXUAL BEHAVIORS.

A. FEMALES 48.2%

B. MALES 41.2%

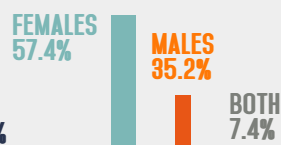
C. BOTH 8.2%

D. DON'T KNOW 2.4%

HAD SEX 41%  
 TESTED HIV 13%  
 USED CONDOMS 67%  
 TESTED FOR STD 11%  
 REFERRED 1.2%

● SEXUAL CONTACT

4,537 OF THE 4,537 STUDENTS WHO REPORTED SEXUAL CONTACT, THESE ARE THE SEXUAL PARTNER DISTRIBUTIONS.



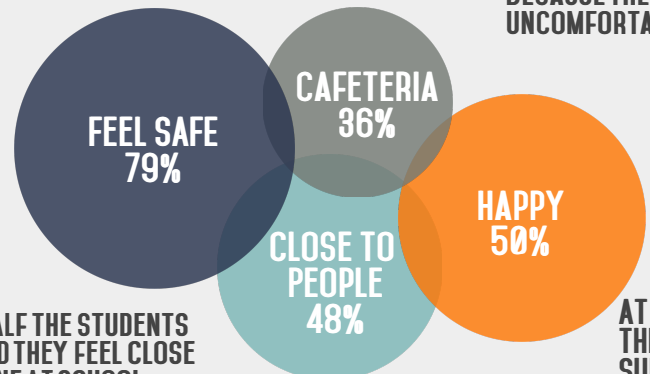
## SCHOOL CLIMATE

THESE ITEMS RELATE TO EXPERIENCES AT SCHOOL AND LEVEL OF COMFORT STUDENTS FEEL ON CAMPUS.



AN AMAZING 8,846 STUDENTS REPORTED FEELING SAFE ON CAMPUS

THE PLACE STUDENTS AVOID BECAUSE THEY FEEL UNCOMFORTABLE.



ALMOST HALF THE STUDENTS RESPONDED THEY FEEL CLOSE TO SOMEONE AT SCHOOL

AT LEAST HALF OF THE STUDENTS SURVEYED FEEL HAPPY.