

# PBS Newsletter

September, 2009

Jensen Beach High School – Where the FALCONS  
SOAR!

**S** Safe  
**O** Organized  
**A** Achievers  
**R** Respectful



Welcome back to another year at Jensen Beach High! For those of you who are new to our school, PBS is the research-based **POSITIVE BEHAVIOR SUPPORT** process at Jensen Beach High School. Through PBS, effective collaborative strategies are used to reinforce positive behavior.

We invite you to join our team which helps to implement this positive process! Our next meeting will be September 23rd (early release day) at 3:15pm in the Staff Development Room in the media center.

All instructors should have received - as well as given out — SOAR tickets. The SOAR tickets are to be given to a student when they meet or exceed a behavior expectation – they are NOT to be used for an academic reward..

Throughout the year, students will have the

opportunity to utilize their SOAR tickets. Whether they choose to use their tickets to purchase cookies from the cafeteria or participate in reward events (such as silent auctions where they have a chance to win some VERY COOL prizes) - there is some thing for everyone who SOARS!

## Teachers SOAR too!

Teachers who hand out SOAR tickets get rewarded also! Besides experiencing improved student behavior, teachers will also have the opportunity to win some VERY COOL prizes via drawings held throughout the year.

Here are some suggestions on giving out your SOAR tickets:

- Opening the door for someone
- Helping another student or staff member
- Picking up trash
- Volunteering in class
- Being respectful
- Reporting inappropriate behavior
- Encouraging a peer



For more SOAR  
tickets, please contact  
Sarah Silva

# Jensen Beach High School – Where the FALCONS SOAR to SUCCESS!



As we are heading towards attaining Model PBS School status, all three tiers of the PBS process will be evaluated. Below is a brief explanation of each tier:

## TIER 1 = UNIVERSAL PBS

Some of the components of Tier 1 involves active involvement by almost EVERYONE—such as administration, teachers, students, and the PBS training coach. Under this tier, behavior expectations and reward systems are taught to students, various reward activities are implemented throughout the school year, behavior expectations are posted throughout the school, and data is used to revise and update the PBS action plan .

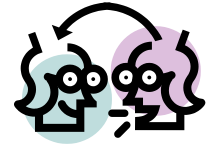
## TIER 2 = SUPPLEMENTAL PBS

Tier 2 includes everything in Tier 1 in addition to the implementation of a progress monitoring system for all students. The needs of students are prioritized to assure that students with the most intensive needs are supported. Some examples are peer mentoring and “check in/check out”.

## TIER 3 = INTENSIVE PBS

Tier 3 includes everything in Tier 2. When you think of Tier 3, think of our “Frequent Flyers” to the deans office. In addition to investigating as to the possible motivation for negative behavior, a Behavior Intervention Plan (BIP) is developed that includes procedures to prevent problem behaviors, teach appropriate behavior, and reinforce/reward appropriate behavior.

## PEER MENTORING IS UNDERWAY AT JBHS!!!



This year we have 45 trained mentors! The Peer Mentors are only allowed to be working with students during their elective block, or lunch. Additionally, the mentees are ONLY allowed to be pulled from a non-academic class, and at a time that is convenient for the teacher.

If you have a student that you think would benefit from having a peer mentor, please fill out a mentee referral form. Some “concerns” that you might look for are the following:

- Isolated or Withdrawn
- Lack of motivation
- Worried or anxious
- Relationship issues

Mentee referral forms are available on the common drive, the dean’s office and in guidance.

## BECOME A TEACHER MENTOR!

In addition to peer mentoring, teacher mentoring is available as well! The teacher mentoring program pairs level 1 JBHS students with a teacher. The teacher stays with the student his/her entire high school career. Teacher meets with student once a month to go over policies, procedures, updates, or to just chat. The teacher makes the student feel known, valued, and inspired.

Contact Lori Kane if you are interested in becoming a mentor to a JBHS student.

# Upcoming Events

Here is our September and October calendar of events (prizes and dates are subject to change):

- September 4, 2009 : Ice cream bar during lunch  
(2 SOAR tickets)
- September 11, 2009: Soda at the home football game  
(2 SOAR tickets)
- September 18, 2009: One warm chewy cookie during lunch  
(1 SOAR tickets)
- September 25, 2009: Raffle (t-shirts, etc) during lunches  
(1 SOAR ticket)
- October 23, 2009 : BIG give-away  
(Details to be announced soon!)



**SOARING  
TO  
SUCCESS**



The first person to e-mail Hailey the correct answer will win either 100 free copies (copy use on the school copy machines) or a batch of Hailey's lemon bars (they are REALLY good!). Which tier does peer mentoring fall under?