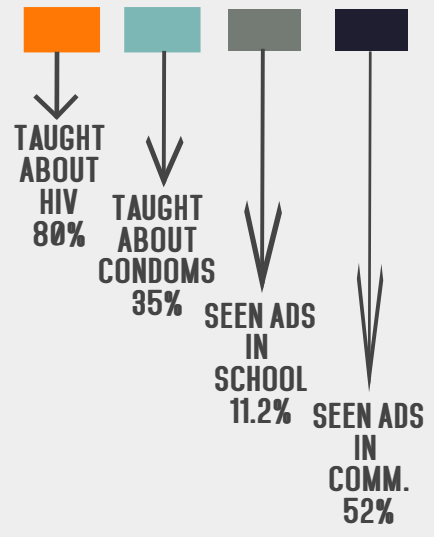
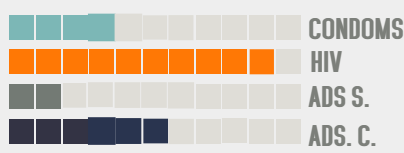


## SEXUAL EDUCATION

**FORT LAUDERDALE HIGH**  
N= 1,723

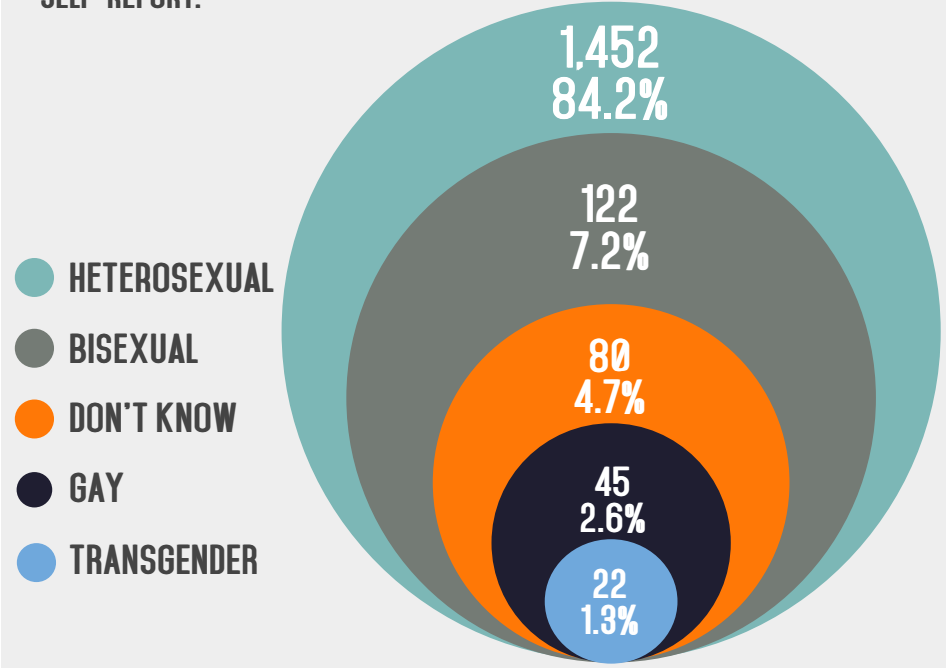


THIS SECTION IS NOT JUST RELATED TO FORMAL EDUCATION BUT TO THINGS THEY MIGHT LEARN FROM THEIR ENVIRONMENT.

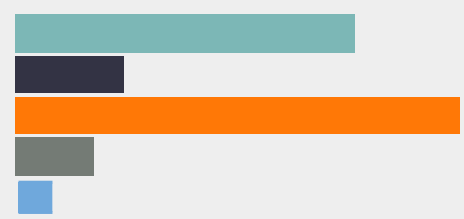


## IDENTITY REPORT

SOME OF THESE NUMBERS ARE EXPECTED TO BE LARGER SINCE THIS IS A SELF-REPORT.



## SEXUAL PRACTICES

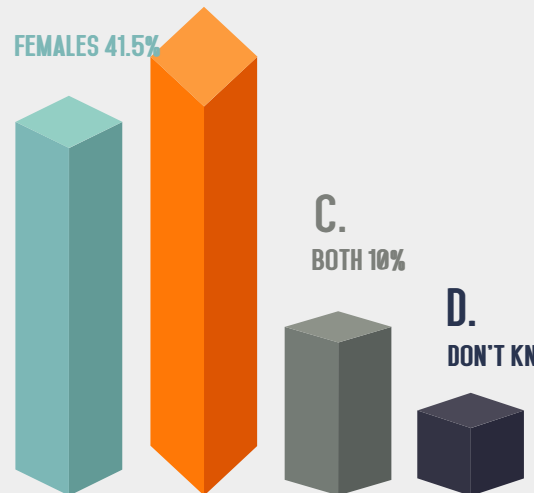


● ATTRACTION

THE LARGE COLUMNS REPRESENT ATTRACTION WHICH IS NOT THE SAME AS ENGAGING IN SEXUAL BEHAVIORS.

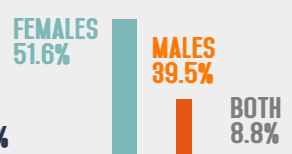
HAD SEX 37.6%  
 TESTED HIV 15.5%  
 USED CONDOMS 65%  
 TESTED FOR STD 13%  
 REFERRED 0.2%

A. FEMALES 41.5%  
B. MALES 46%



● SEXUAL CONTACT

624 OF THE 624 STUDENTS WHO REPORTED SEXUAL CONTACT, THESE ARE THE SEXUAL PARTNER DISTRIBUTIONS.



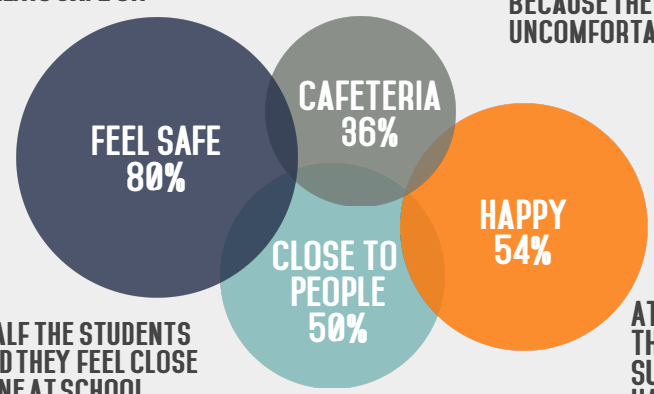
## SCHOOL CLIMATE

THESE ITEMS RELATE TO EXPERIENCES AT SCHOOL AND LEVEL OF COMFORT STUDENTS FEEL ON CAMPUS.



AN AMAZING 1,347 STUDENTS REPORTED FEELING SAFE ON CAMPUS

THE PLACE STUDENTS AVOID BECAUSE THEY FEEL UNCOMFORTABLE.



ALMOST HALF THE STUDENTS RESPONDED THEY FEEL CLOSE TO SOMEONE AT SCHOOL

AT LEAST HALF OF THE STUDENTS SURVEYED FEEL HAPPY.